

182.212 mm

145.70 mm

Distortion/warp zone (5mm)

Sleek Can 355ml

ONPACK

File size

→ Total file area including no type and distortion areas: 182.212 x 145.7mm.

Preparing artwork

→ Open our supplied artwork dieline in either Adobe Illustrator or Indesign.
→ Place all artwork on the 'Artwork' layer.
→ Minimum type size is 4pt (6pt for reversed white text).
→ Fully embed/outline all fonts (not sub-setted).
→ Embed all images/files.
→ Set image resolution to no less than 300dpi.

Warp zone

→ Artwork within the warp zone will become distorted, so avoid small type and details in this area.

Document colours

→ Documents must be CMYK not RGB.
→ Please don't convert Pantone colours to CMYK. Ensure any PMS colours have the conventional Pantone names.

Spot varnish

→ Create spot varnish using the appropriately named spot colour in the swatches palette (e.g. Spot Gloss/Spot Matt) and placing it on a 'Spot Varnish' layer.

White ink

→ If white ink is required, create a swatch called 'White' in the swatches palette. Keep white areas on a separate layer.

Metallic

→ The base colour of the can provides a metallic appearance. To incorporate this effect into your design, ensure that areas requiring a metallic look are not placed over white ink in the 'White Ink' layer.

Barcode

→ The barcode is to be minimum 80% magnification with adequate quiet zones.
→ Refer to the GS1 Australia website (gs1au.org) for more information.

COLOUR INFORMATION - PLEASE NOTE THAT ALL COLOURS REPRESENTED ARE A SIMULATION ONLY AND SHOULD NOT BE TREATED AS AN ACCURATE GUIDE TO PRINT QUALITY UNLESS SPECIFIED OTHERWISE.

COLOUR REPRODUCTION	TECHNICAL	PRESENTATION	IMPORTANT INFORMATION
<div>Target</div> <div>Production</div> <div><div></div><div></div><div></div><div></div></div>	Can Size: -Sleek 355ml Can Artwork Template	Cans Per Layer: -506 Cans Layers Per Pallet: -13	<div><div>Please check artwork thoroughly as once approved, any errors are the liability of the client.</div><div>Please approve final art online. If this is not available please email scanned signed final art to your account representative to allow us to proceed. Any delay advising could result in a delay in production. Changes to artwork may incur extra cost.</div></div> <div><div><div>APPROVED BY</div><div>Client Signature Date: / /</div></div></div>

-
Product: -

Product No: -
Your Ref No: -

16/06/2023



COLOUR INFORMATION - PLEASE NOTE THAT ALL COLOURS REPRESENTED ARE A SIMULATION ONLY AND SHOULD NOT BE TREATED AS AN ACCURATE GUIDE TO PRINT QUALITY UNLESS SPECIFIED OTHERWISE.

COLOUR REPRODUCTION

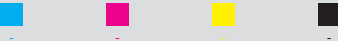
TECHNICAL

PRESENTATION

IMPORTANT INFORMATION

Target

Production



Can Size: -Sleek 355ml Can Artwork Template

Cans Per Layer: -506

Cans Layers Per Pallet: -13

Please check artwork thoroughly as once approved, any errors are the liability of the client.
Please approve final art online. If this is not available please email scanned signed final art to your account representative to allow us to proceed. Any delay advising could result in a delay in production. Changes to artwork may incur extra cost.

APPROVED
BY

Client Signature
Date: / /